

Warning

A warning indicates a potentially hazardous situation which, if not avoided could result in death or serious injury.

1. Read all instructions and save them for later reference.
2. Follow all warnings and instructions marked on the product.
3. Do not stand on the carrier.
4. Do not ride any vehicle during loading.
5. Store the B-Dawg carrier in a safe place.
6. Do not exceed vehicle tongue weight rating.
7. Only use with a Class III hitch. Most Class III hitches limit total hauling capacity to 500 lbs.
8. Improper use of the carrier could result in death or serious injury.
9. Do not put the carrier onto a 5th wheel trailer or any other kind of trailer.
10. **Carrying capacity is limited to 400 lbs. max. Your vehicle suspension and hitch may limit the hauling capacity of the carrier. For more information on vehicles and hauling capacities, visit www.versahaul.com.**

Manufacturer Information:

BNK, Inc.
9341 S. St. Rd. 39
Winamac, IN 46996
(574) 278-7149

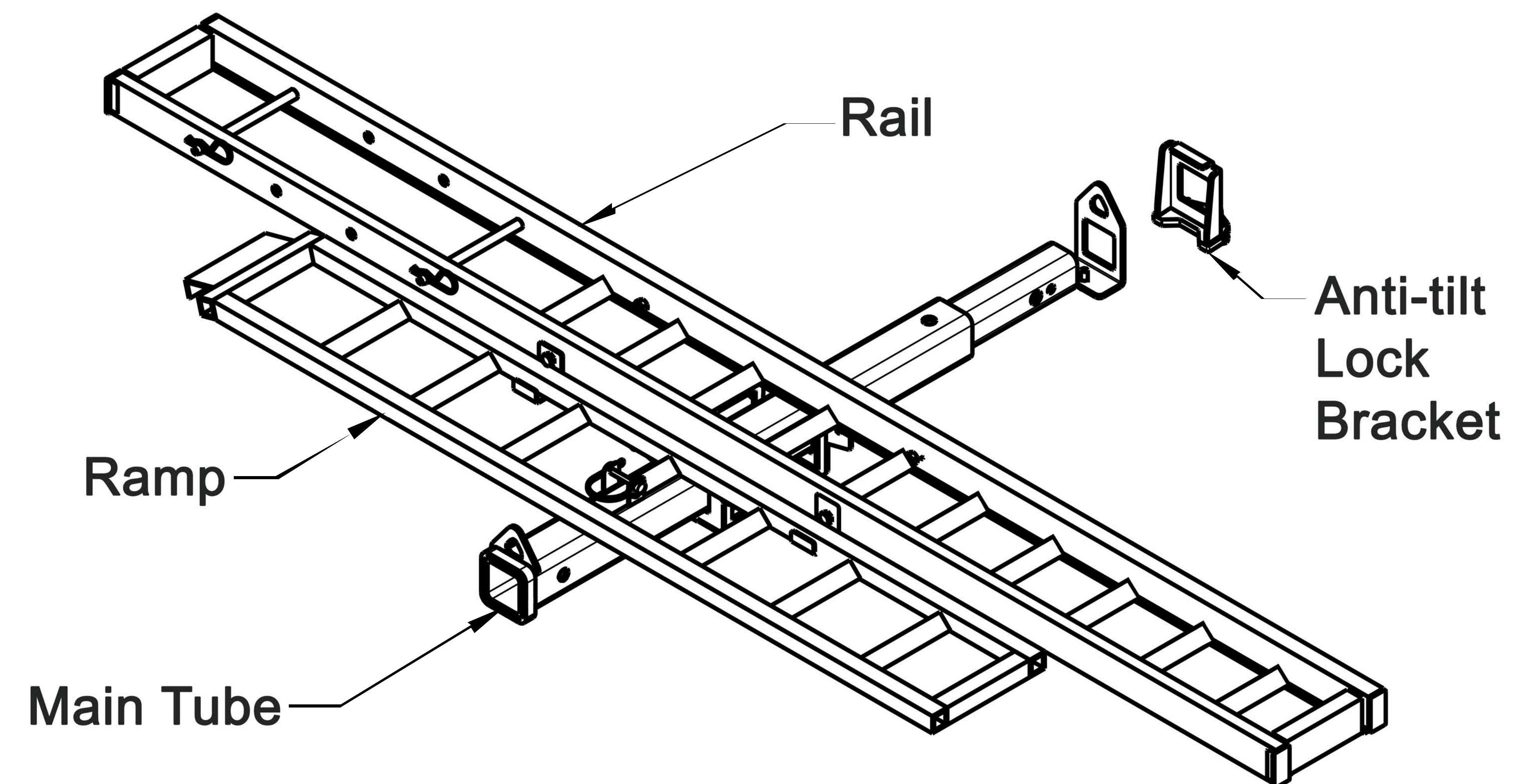
Product Name: B-Dawg Motorcycle Carrier

Product Description: Single Aluminum Towing Motorcycle Carrier

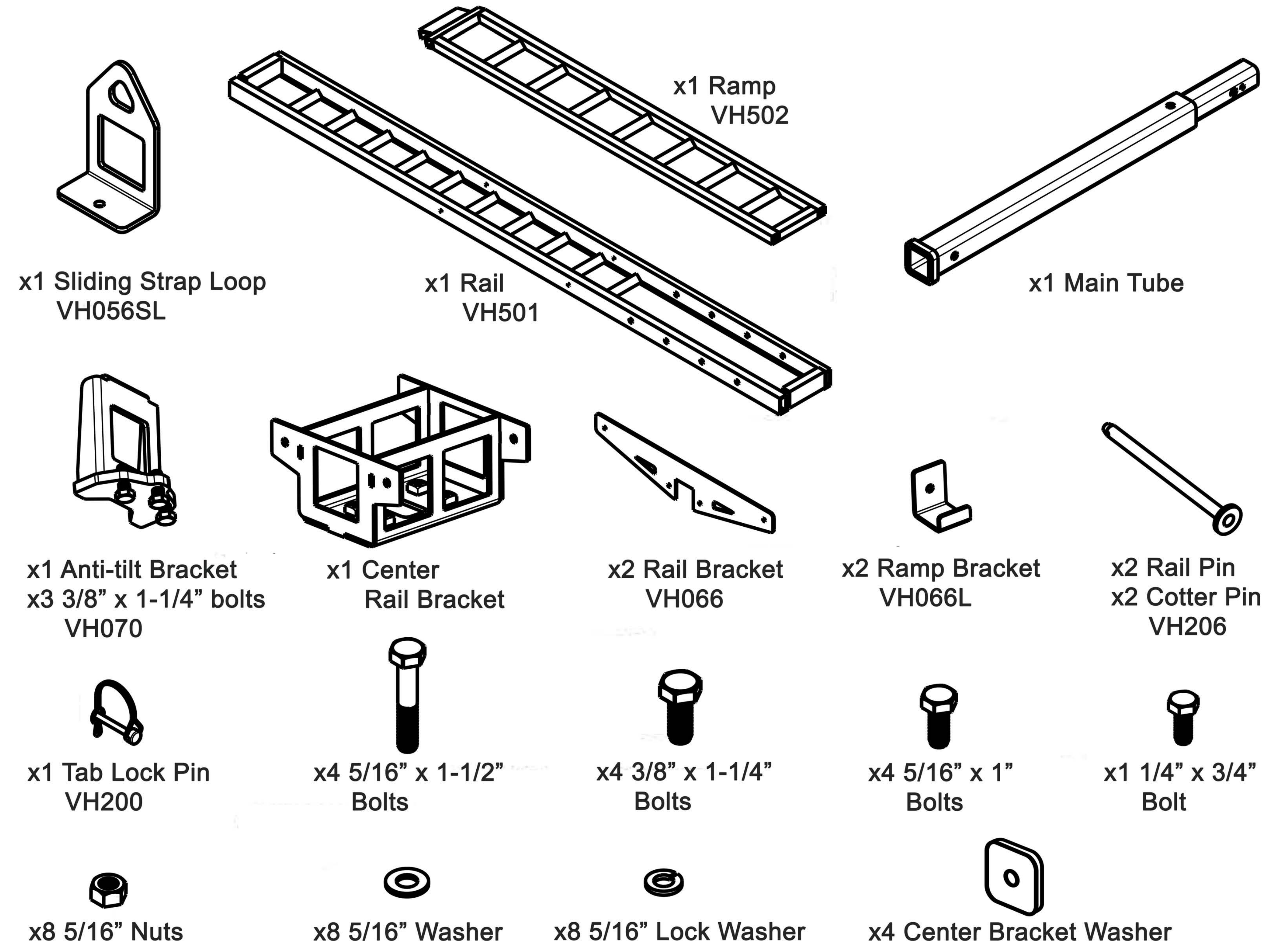
Model Number: BD-Single TO

Serial Number: _____
(please fill in serial number affixed to the carrier)

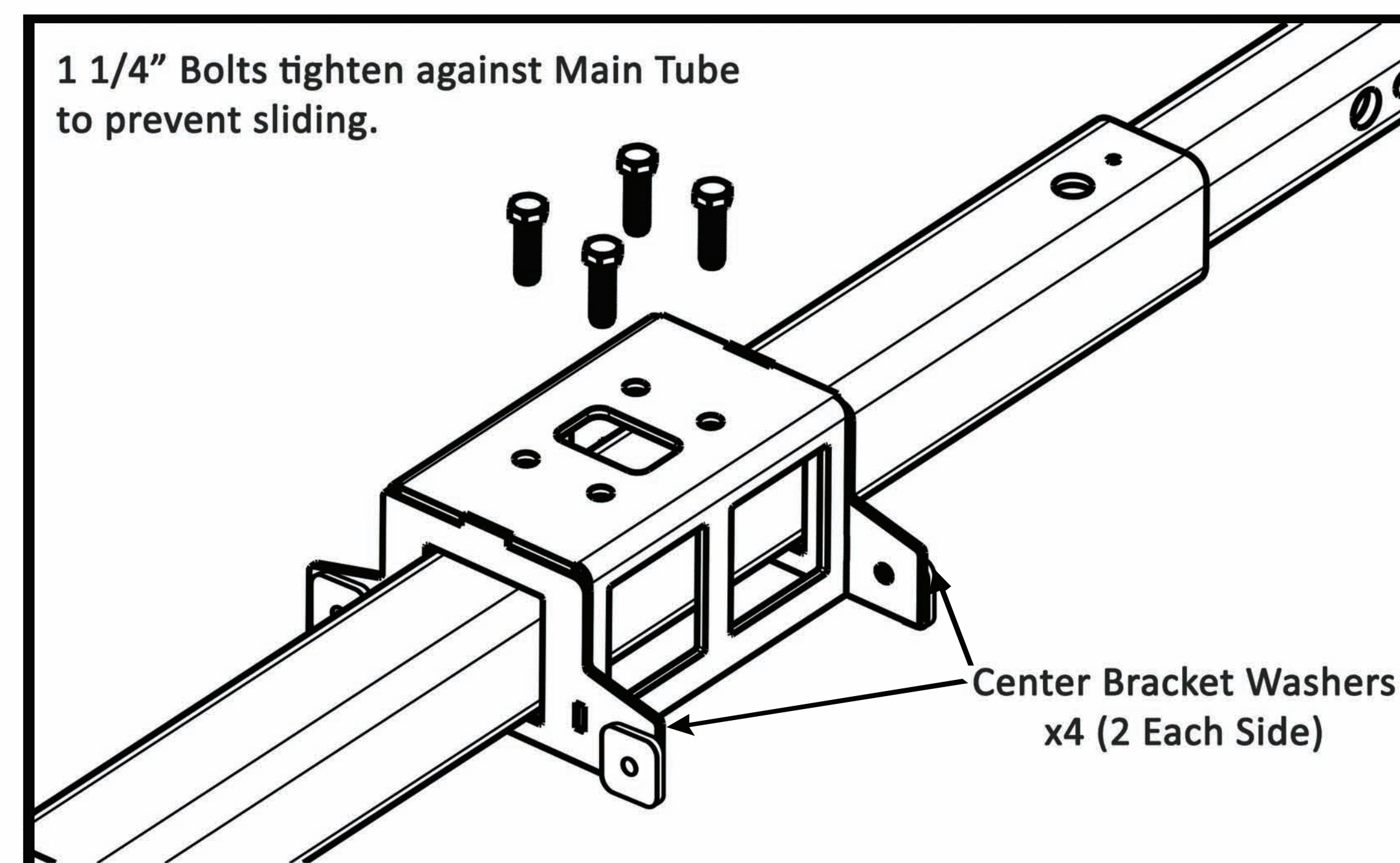
BD-Single with Towing Option Instruction Manual



Parts List:

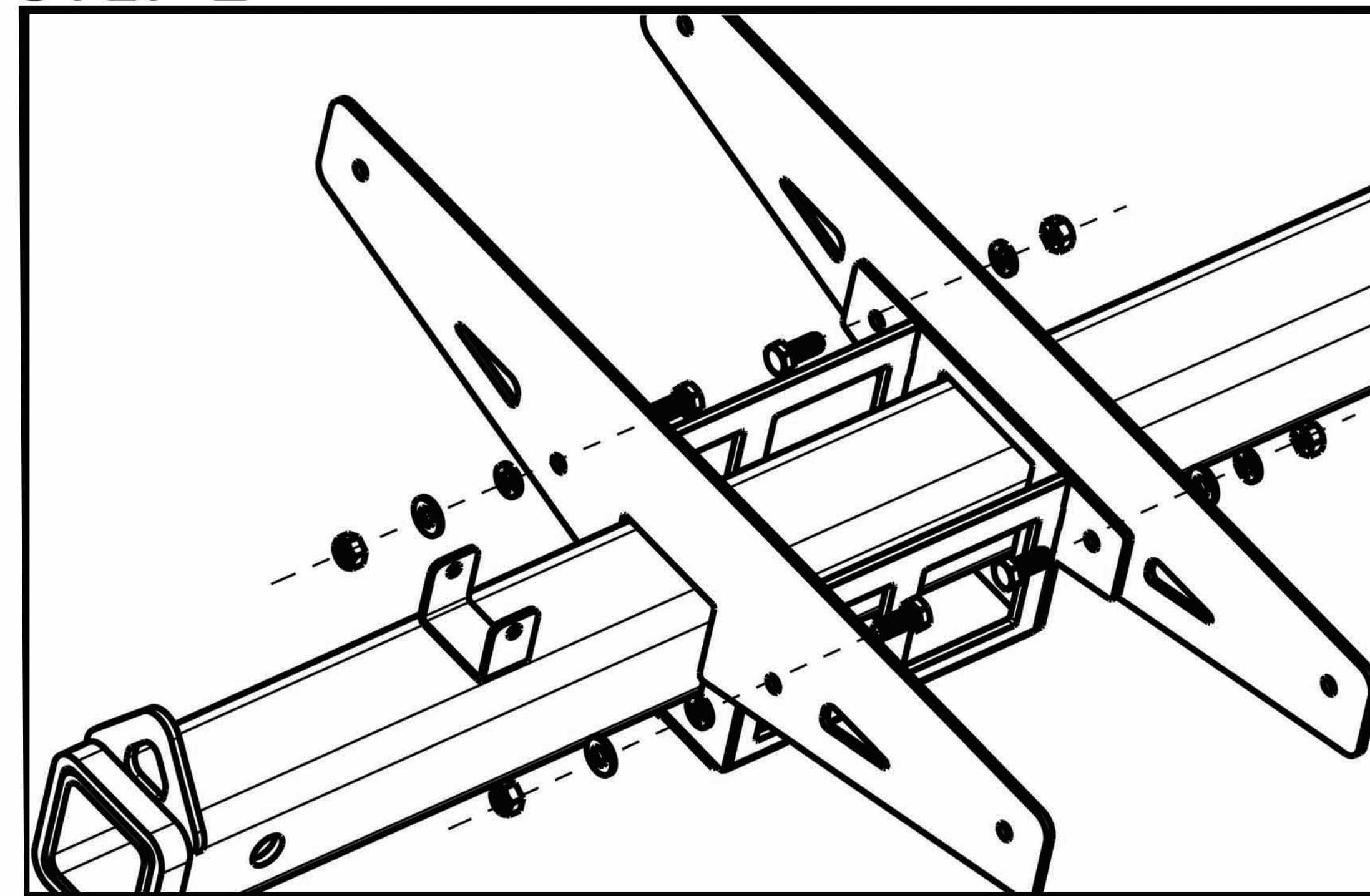


STEP 1



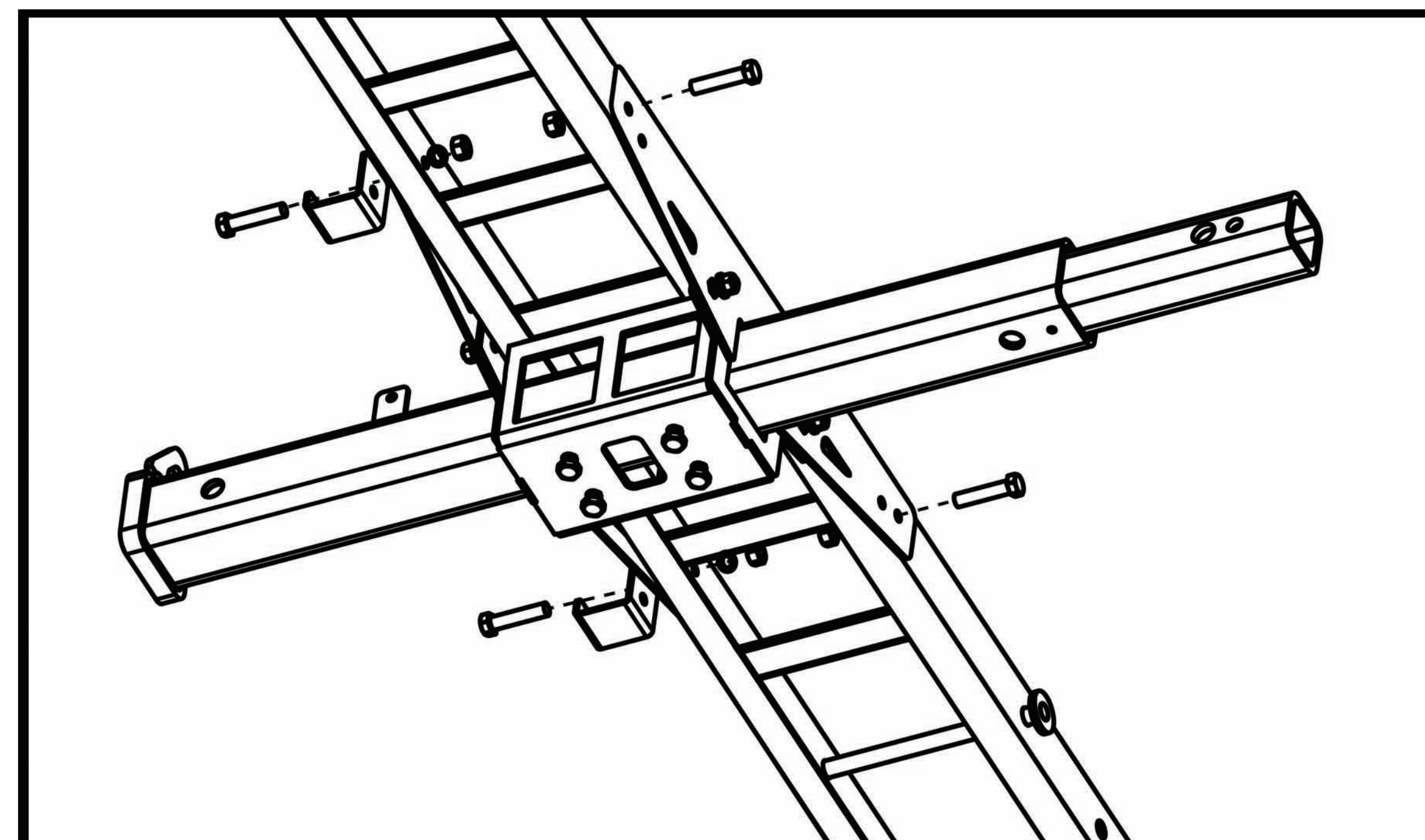
Slide rail bracket onto main holding tube and adjust according to desired placement. Tighten the four 3/8" x 1 1/4" bolts to lock position of rail brackets. This setting can be readjusted at a later time. Align the four Center Bracket Washers for securing in Step 2.

STEP 2



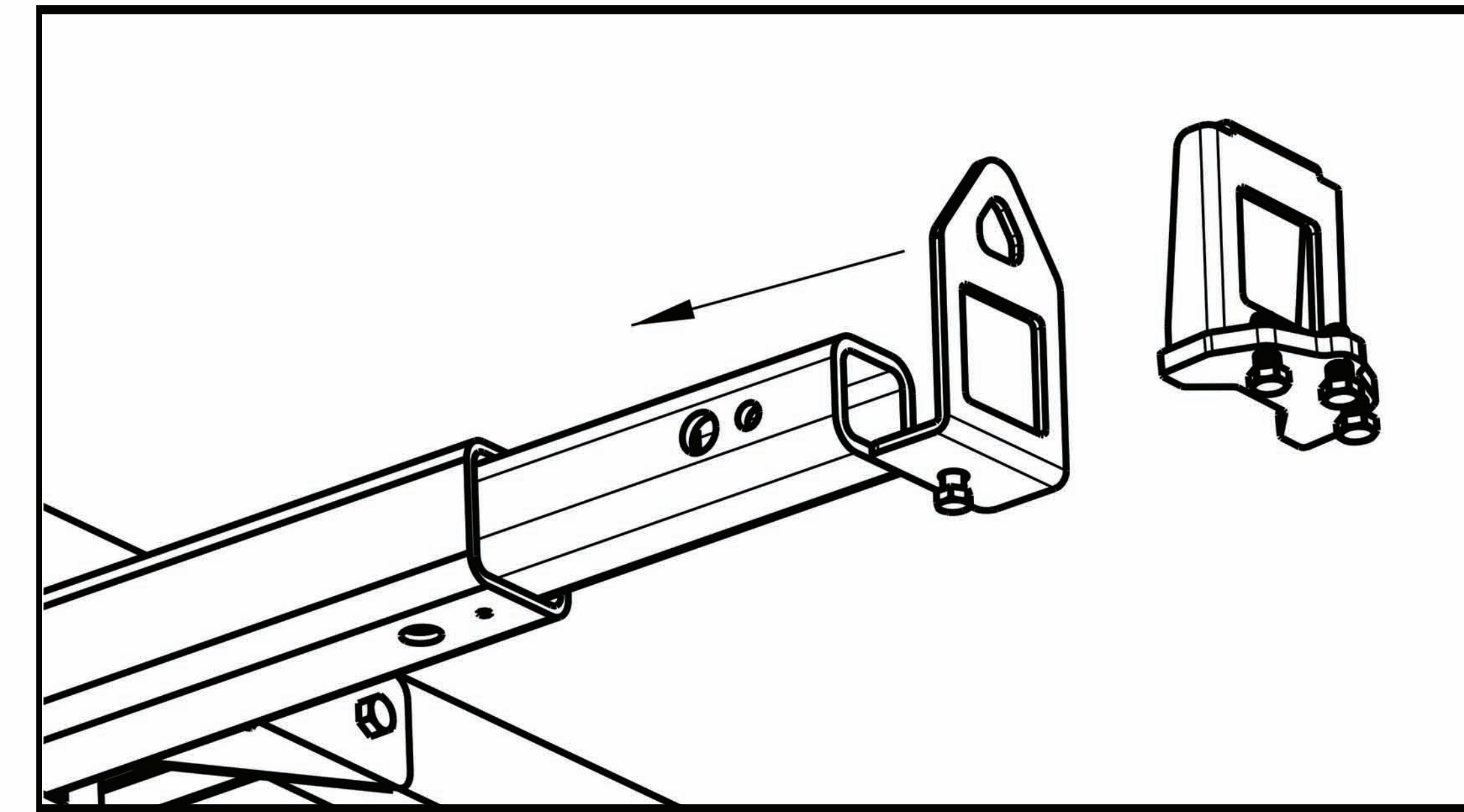
Attach the side rail brackets to the sides of the center rail bracket with the Center Bracket Washers from Step 1 in between. Bolt them together using the 5/16" x 1" bolts, 5/16" washers, lock washers and nuts. Do not tighten the bolts just yet. Leave them loose until the rails are installed.

STEP 3



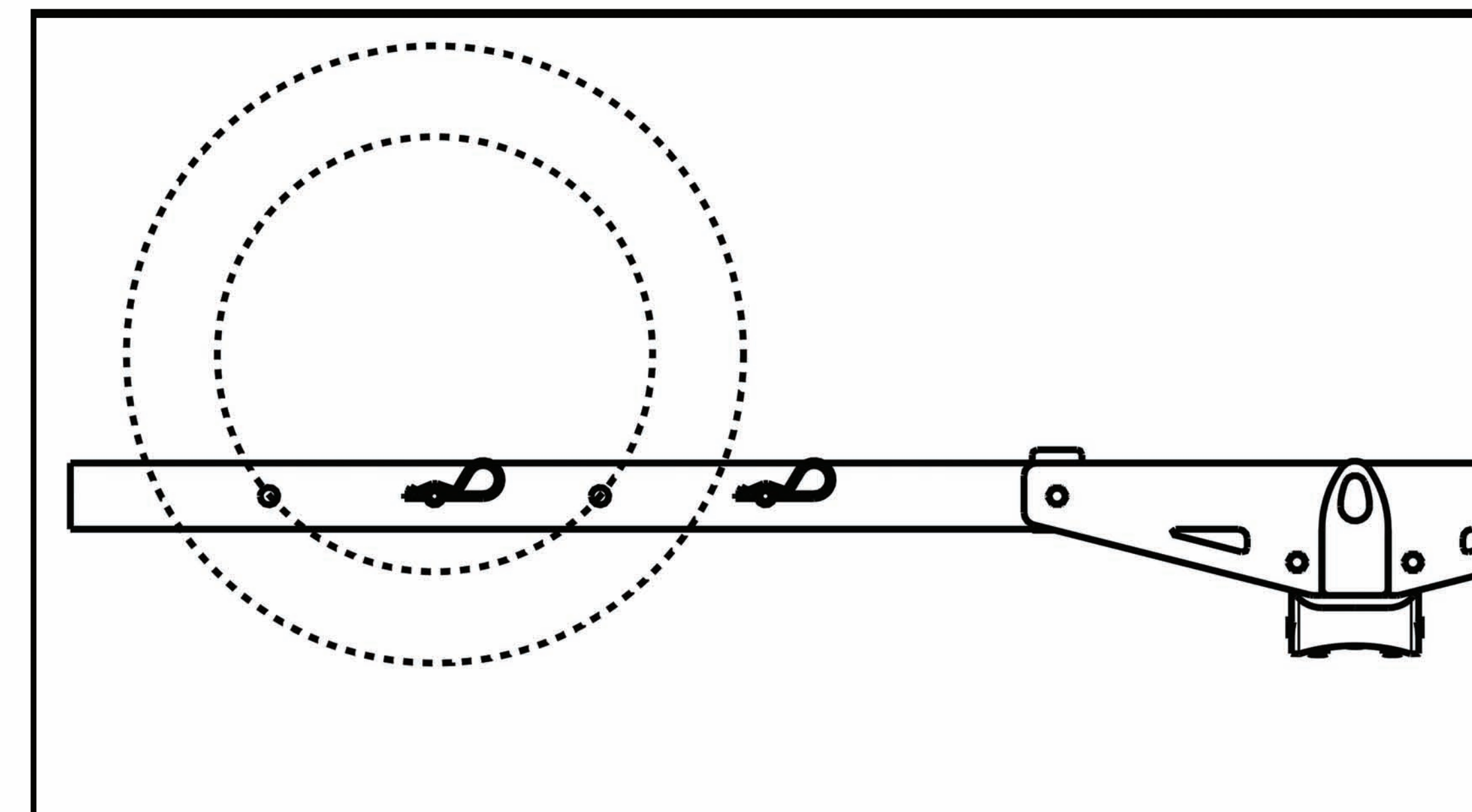
Secure the Rail and the Ramp Bracket to the Assembled Main Tube using the 5/16" x 1-1/2" Bolts, Washers, Lock Washers and Nuts. The side of the Rail with the empty slot will be where the front tire of your bike sits. Tighten all bolts.

STEP 4



Slide the Sliding Strap Loop and the Anti-tilt bracket onto the Main Tube. Tighten the 1/4" x 3/4" Sliding Strap Loop bolt against the tube and insert the carrier into your hitch receiver. Once the carrier is secured with your hitch pin, push the anti-tilt bracket against the lip on your hitch receiver and tighten the 3/8" bolts, sides first, and then the middle one.

STEP 5



Insert Rail Pin into the appropriate holes such that your bike's tire would fall into the rail as shown. Lock the Rail Pin with the Cotter Pin. The second Rail Pin can also be used to lock your bike's front wheel by inserting it through the wheel spokes.